



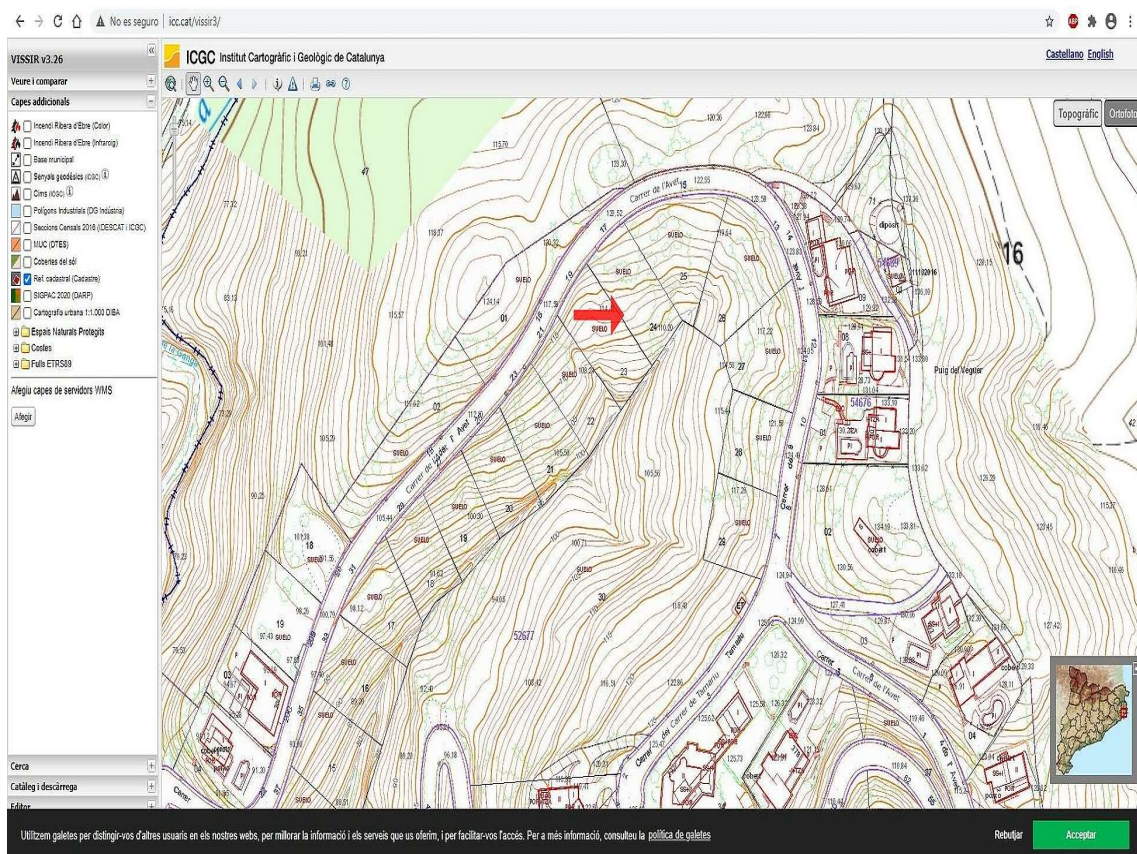
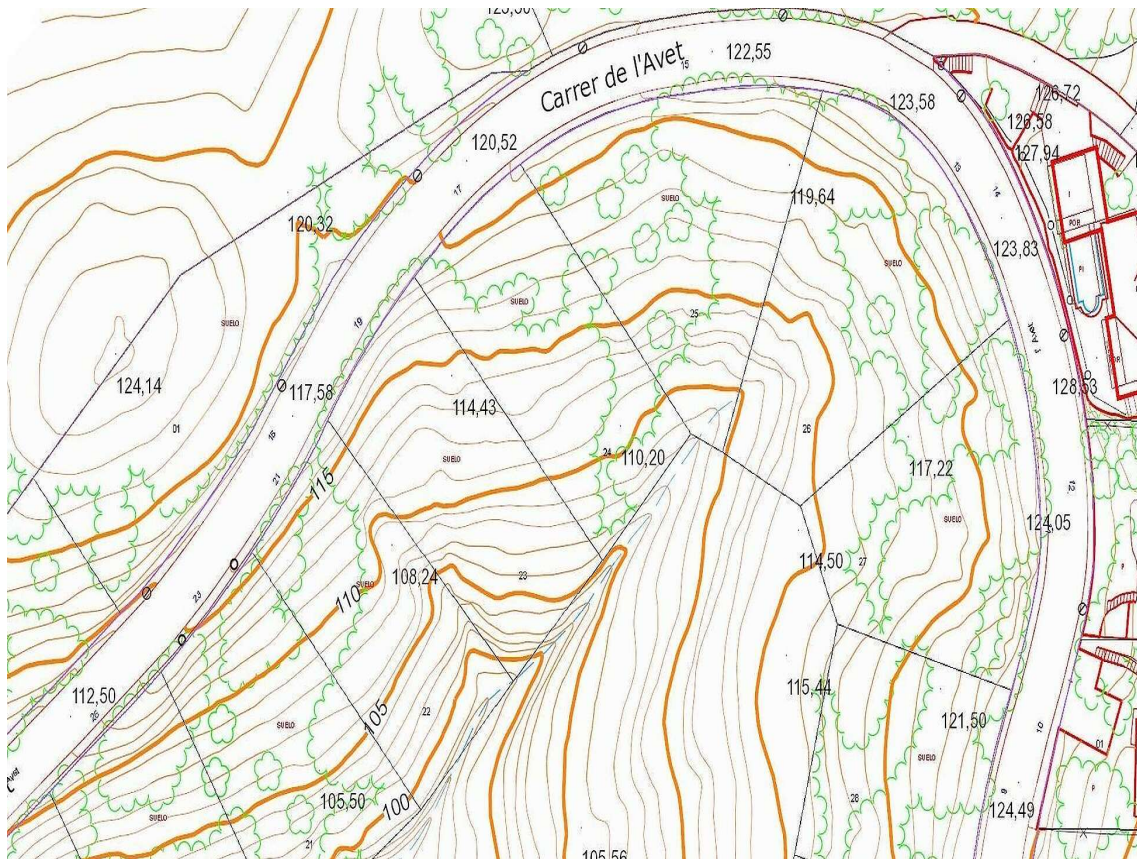
85.000 €

We present an exclusive opportunity to acquire an impressive 715m² plot in the Río de Oro urbanization. This strategically located plot, facing south, offers panoramic views of the majestic Masís de les Gavarres, providing a natural and serene setting. The topography of the plot features a moderate incline, providing the opportunity to design a unique residence that seamlessly integrates with the surroundings. With a generous facade of 19.30 meters and a depth of 39 meters, this plot offers an ideal canvas to materialize the house of your dreams. The urban classification of the plot is designated for the development of a single-family home, giving you the freedom to create a customized residence tailored to your needs. The area, known for its tranquility and security, is fully urbanized, ensuring a high-quality residential environment. Key features: Area: 715m² Orientation: South Views: Masís de les Gavarres Incline: Moderate Facade: 19.30m Depth: 39m Urban Classification: Single-Family Home Area Characteristics: Quiet and Fully Urbanized This is a unique opportunity to invest in a plot that not only offers a privileged location but also the freedom to build the house of your dreams in a tranquil and well-established environment. Feel free to contact us for more information or to schedule a visit to this exceptional plot

Transaction:	Sale	Municipality:	Baix Empordà
Surface area:	715 m ²		







This is a screenshot of the ICGC VISSIR v3.26 web application interface. The browser address bar shows "iccat/vissir3/". The interface includes a search bar, navigation tools, and a legend on the left side. The legend lists various map layers such as "Inventari Ribera d'Ebre (Color)", "Base municipal", "Sinyals geodèsics (ICGC)", "Cims (ICGC)", "Polígons Industrials (DG Indústria)", "Seccions Catastrals 2014 (IDESCAT i ICGC)", "NUC (OPES)", "Cobertes de sòl", "Red subterrània (Catalunya)", "SINAC 2008 (GADP)", "Cartografia urbana 1:1.000 DGBA", "Espais Naturals Protegits", "Costes", and "Puls ETRS89". The main map area displays the same topographic map as the previous image, with a red arrow pointing to a specific location on Carrer de l'Avet. The interface also includes a "Cerca" (Search) field, "Català i descàrrega" (Catalan and download) options, and a footer with a disclaimer: "Utilitzem galetes per distingir-vos d'altres usuaris en els nostres webs, per millorar la informació i els serveis que us oferim, i per facilitar-vos l'accés. Per a més informació, consulteu la política de galetes." and buttons for "Rebutjar" (Reject) and "Acceptar" (Accept).